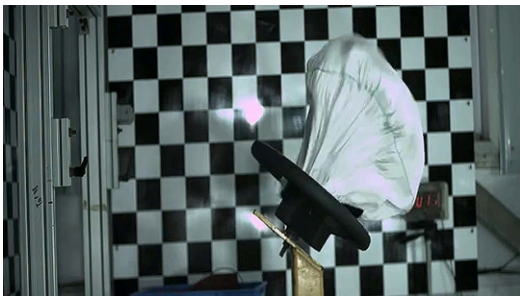


RESOLUTION AND FPS

Min FPS: 20			Approx. Record Time (Seconds)	
Width*	Height	Max FPS	16 GB RAM	32 GB RAM
1280	1024	2,000	6.5	13.1
1280	800	2,560	6.5	13.1
1280	720	2,840	6.5	13.1
1280	640	3,190	6.5	13.1
1280	480	4,250	6.5	13.1
1280	320	6,350	6.6	13.2
1280	256	7,920	6.6	13.2
1280	200	10,000	6.6	13.2
1280	156	12,800	6.6	13.3
1280	120	16,500	6.7	13.4
1280	64	30,100	6.8	13.7
1280	32	56,700	7.2	14.3
1280	16	101,200	7.8	15.6



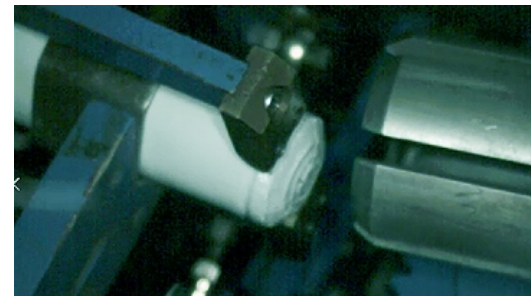
SAMPLE APPLICATIONS



Automotive Testing



Aerospace



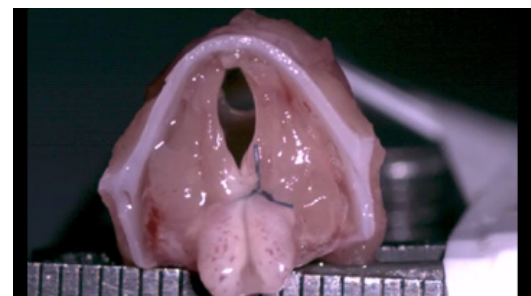
Beverage Packaging



Food Processing



Surface Mining

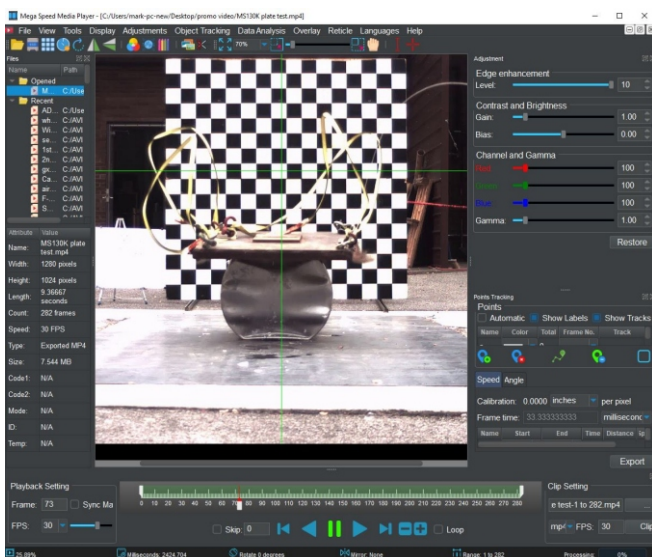
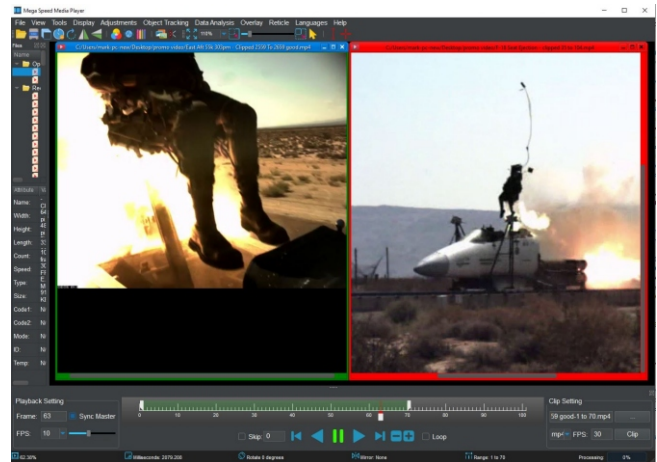
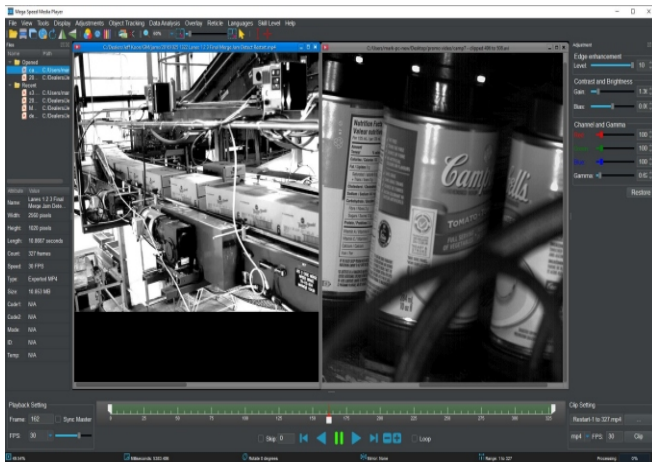
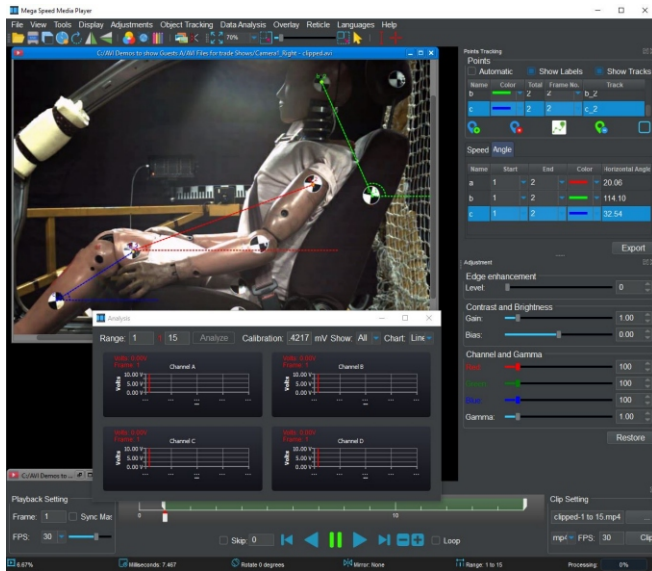


Biology Study



- 1: Gigabit Ethernet
- 2: Standard "C" Mount
- 3: ADC In
- 4: 12 VCD In
- 5: IRIG B
Sync In/Out
Trigger
Ready Out





Making Sense Of Your High Speed Image Data. The Included Mega Speed Media Player!

New Tools To Measure, Synchronize, Batch Process, Clip And Compress. The Fastest Video Analysing Work-Flow Available. Helping You Make Sense Of All Your High Speed Image Data. \$1995.00 Value free with every Mega Speed Camera.



MS55K-SC-HG SPECIFICATIONS

Sensor Type	Color or monochrome CMOS sensor
Image Sizes	User defined in software
Maximum Resolution	1280 x 1024. 2/3" optical format
Minimum Resolution	64 x 2
Maximum Speed	2000 fps at maximum resolution. Higher speed settings at reduced image resolutions
Pixel Size	10 micron x 10 micron square pixel
Shutter Speed	Global shutter 2 us to 30 ms in 1 us steps
Spectral Response	400nm to 1000nm
ISO	12,500 with boost on (Monochrome)
A-D Converter	8 bit
Trigger In Requirement	3 to 24 VDC, active high through multi-pin screw on convection or simple switch closure
Sync Out	TTL 3.3 VDC via multi-pin screw on connection positive active high on exposure
Trigger Modes	Software, manual, pre/post, segmented, synchronized, single sequence or snap shot
IRIG B	IRIG B frame embedded time stamp via multi-pin screw on connection
Editing Software	Image analysis, data acquisition, object tracking, AVI editing & image compression
File Saving	User can save in RAW, AVI, JPEG, BMP, TIF, PNG or MP4 format to PC hard drive
Control Software	Mega Speed Camera Control software
Video Pre-view	Live 30 fps preview to host PC during set up and capture via Gigabit Ethernet
Camera Memory	16 GB DDR standard RAM
Data Download	Real time digital image review and analysis while downloading from camera memory to control PC
Playback Rate	User selectable in PC software from 1 to 500 fps for fast video review
PC Requirements	RJ 45 Gig E connection, Window 10, 64 bit, 2GHz, 16 GB RAM, 500 Gig HD
Networking	All switches and hubs must be Gigabit Ethernet capable
Camera Cable	Requires Cat 6 Ethernet cable for PC connection and control
Lens Mount	Standard "C" mount. "F" and "G" mounts available
Camera Size	4.5" x 4"x 4"
Camera Weight	900g
Camera Body	Machined anodized aluminum
Power Requirements	120 or 240 VAC for camera power supply or 1.7 amps @ 11 - 13 VDC for direct connection
Shock Rating	150g for 10 milli-seconds 10 times all (6) axis. Operational vibration meets 0.25g, from 5-500Hz
Temperature	Operating temperature is -40° C to 40°C