

MEGA SPEED®

HHC X9 PRO

RESOLUTION AND FPS

Min FPS: 20			Approx. Record Time (Seconds)
Width*	Height	Max FPS	16 GB RAM
1920	1080	2,160	3.8
1920	800	2,910	3.8
1920	720	3,230	3.8
1920	480	4,830	3.8
1920	320	7,220	3.9
1920	120	18,800	3.9
1920	64	34,200	4.0
1920	32	64,400	4.2
1920	16	115,000	4.6
1280	1024	2,270	5.7
896	600	3,870	8.2
640	480	4,830	11.5
256	256	9,000	29.0

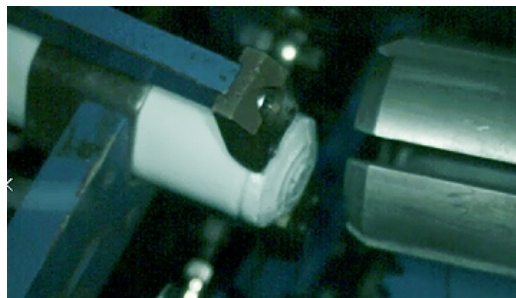
**A PORTABLE HAND-HELD
HIGH SPEED CAMERA FOR
LAB OR FIELD USE.
NO PC, NO LIGHTS,
NO CABLES REQUIRED!**



SAMPLE APPLICATIONS



Food Processing



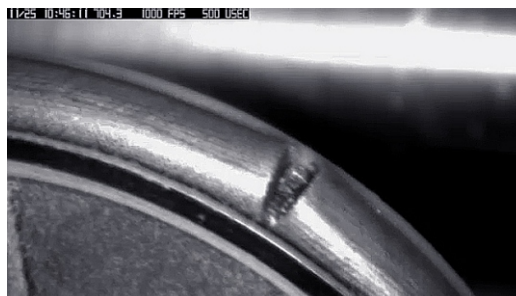
Beverage Packaging



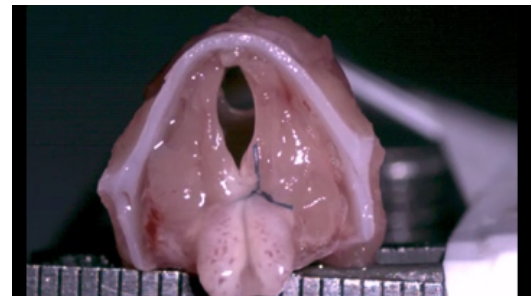
Surface Mining



Pharmaceuticals



Trouble-Shooting



Biology Study

Rugged, impact resistant, shock protected, high strength injection molded case

Industry standard "C" mount or optional "F" mount for easy lens selection

Re-moveable solid state drive for years of worry free performance and convenient memory upgrades



Convenient neck strap mounts for added comfort while recording

Ergonomic over-molded rubber hand grips prevent accidentally dropping your camera

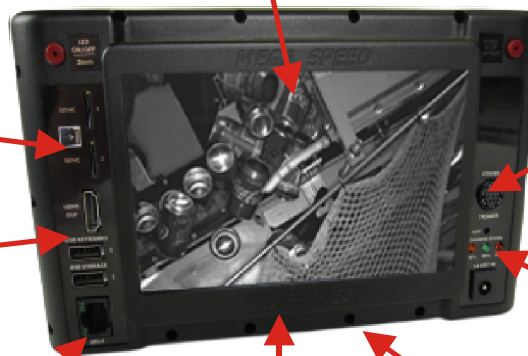
Built in high power LED work lights. No need to drag around or plug in extra work lights

Large 6" screen for a clear view of your recordings

Several detachable and on-board file storage options like SDHC, USB or hot-swap solid state drives

HDMI & USB mouse ports for remote viewing the camera in confined spaces

Gigabit LAN control for when you want to control the camera from your PC



Sync in/ sync out, triggers, frame marker ADC & IRIG-B input options available

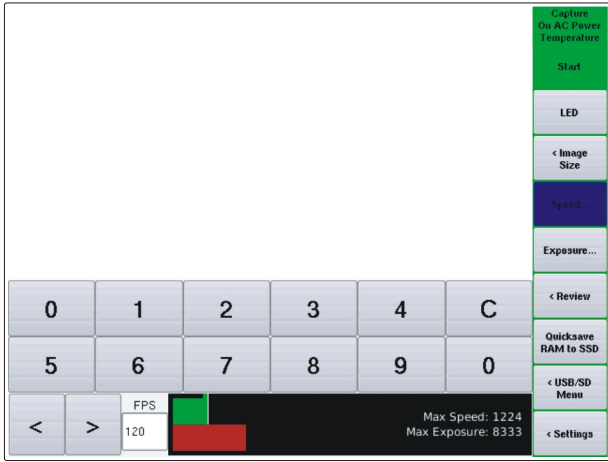
Intelligent charging module charges the battery while recording

1/4 x 20 TPI tri-pod mounts for secure camera mounting

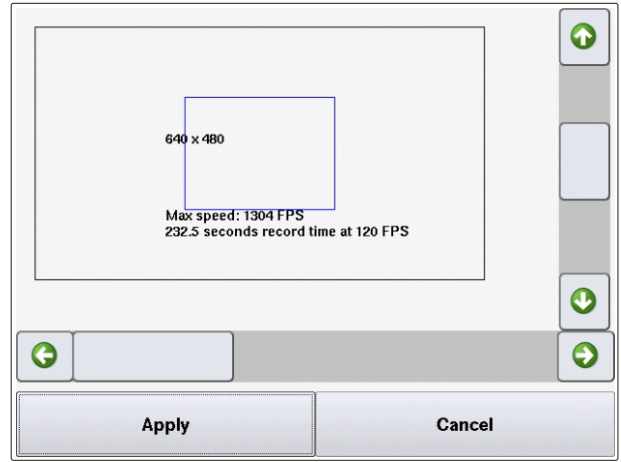
Over-molded rubber screen bumper protects the high resolution touch screen

Recording rates from 30 fps to 256,000 fps

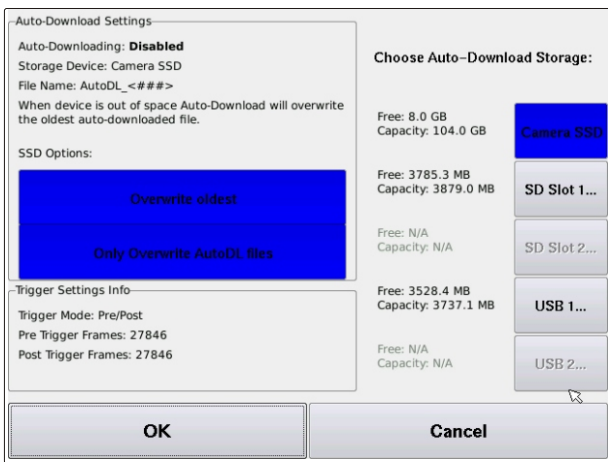
All Inclusive 3 year Warranty



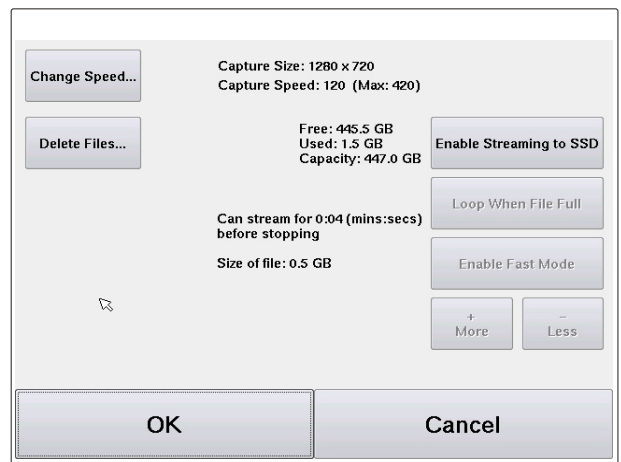
EASY TO FOLLOW MENU FOR ALL CAMERA SETTINGS



SELECT ANY IMAGE SIZE TO MATCH YOUR APPLICATION



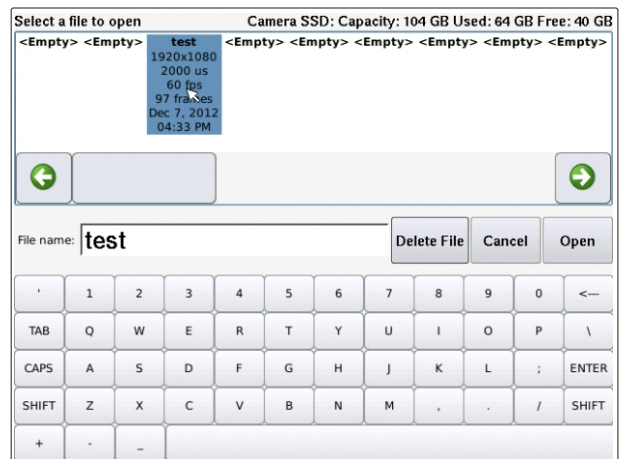
AUTO-DOWNLOAD OPTIONS TO CONTINUOUSLY SAVE EVENT TRIGGER VIDEO FROM YOUR PLC



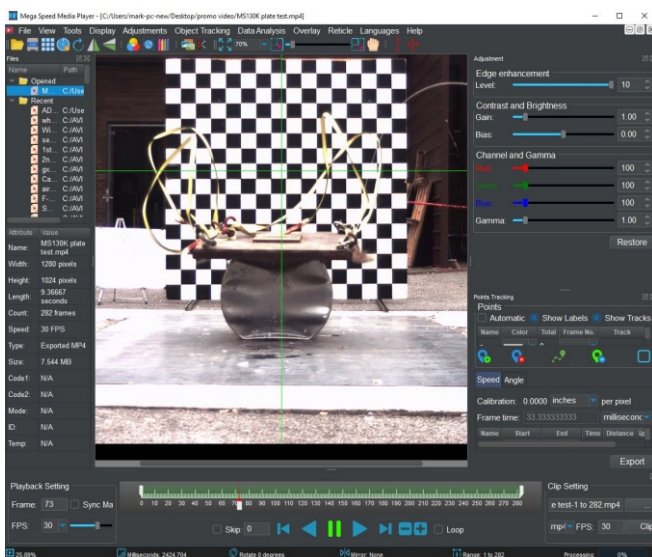
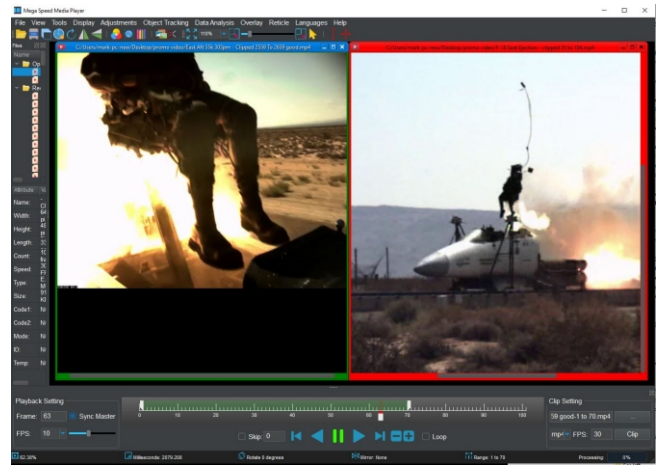
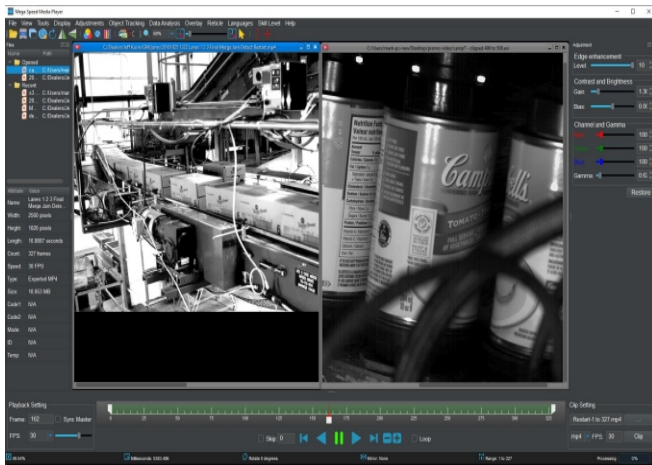
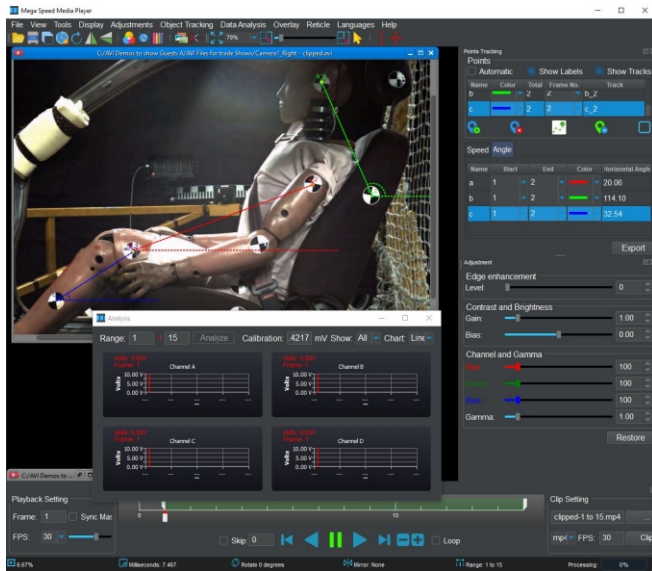
SAVE RIGHT TO THE CAMERAS SSD FOR EXTENDED RECORDING TIMES



MULTIPLE STORAGE & FILE SAVING OPTIONS



EASY TO MANAGE FILE LOCATION MENU



Making Sense Of Your High Speed Image Data. The Included Mega Speed Media Player!

New Tools To Measure, Synchronize, Batch Process, Clip And Compress. The Fastest Video Analysing Work-Flow Available. Helping You Make Sense Of All Your High Speed Image Data. \$1995.00 Value free with every Mega Speed Camera.



HHC X9 PRO SPECIFICATIONS

Sensor Type	4/3" color or monochrome 1920 x 1080 format CMOS
Work Lights	Built in high power LED work lights for the most challenging scene lumination
Maximum Resolution	1920 x 1080
Speed	2000 fps at maximum resolution 256,000 fps at minimum resolution
Pixel Size	10 x 10 um pixel pitch
Shutter Speed	Global electric shutter 2 us to 40 milli-seconds in precise 1-2 us steps for no high speed blur
LCD Screen	Rear high resolution LCD screen. Full touch screen operation and control
ISO Equivalent	10,000
A-D Converter	10 bit pixel bit depth
Trigger In	3 to 48 VDC TTL centre pin positive, manual, external, countdown timer or switch closure
Strobe/Sync Out	3.3 VDC TTL via multi pin connector center pin positive, active high
Input Voltage	14 VDC from wall adapter when required
IRIG B	Optional IRIG B time code ready via multi pin connector for time stamping on recorded images
Data Acquisition	Data acquisition connection of rear of camera to accept outside signal source
File Saving	User can save images in AVI, JPEG, BMP, TIFF, RAW and DNG file formats
Streaming Mode	Stream in long record mode up to 2000 fps to the internal removable SATA SSD
Video Out Formats	HDMI interface for TV / monitor and one optional 3GSDI out port
Camera Memory	16 GB internal high speed internal image buffer memory
Removable Storage	1 SSD, 2 USB ports & 2 micro SD ports
Tripod Support	Camera has integrated ¼ x 20 tri-pod thread
PC Requirements	2GHz, 8 GB RAM. 1 USB and 1 Gig E connection. (Only needed if you connect camera to a PC)
PC Software	Camera control software for image transfer, object tracking, image analysis, video editing
PC Interface	Gigabit Ethernet for full camera control and downloading files from the camera's RAM & SSD
WiFi / LAN	Camera can connect to LAN network and camera has optional WiFi connectivity
Lens Mount	Standard "C" mount. "F" mounts available
Camera Size	3" x 9" x 5"
Camera Weight	3.5 lbs with battery
Camera Body	Self contained, hand held with advanced light weight rugged Space Age ABS body
Camera Battery	Lithium-ion re-chargeable / removable battery with power saving features
Temperature	0°C to 45°C Operational range. -40°C to +50°C storage range